

Retinal Dyes

REFERENCES

TWIN

Different twins: brilliance and safety.

Panozzo G.
95° SOI National Congress, Rome, November 25-28, 2015.

The importance of a cohesive dye in chromovitrectomy.

Mariotti C.
XII Givre National Congress. Trieste, June 16-18, 2016.

Negative staining of the vitreous with the use of vital dyes.

Mariotti C., Nicolai M., Donati S., Reibaldi M.
European Journal of Ophthalmology. 28(1): 117-118, 2018

view ILM

New dyes and new light sources in vitreoretinal surgery.

Beltrame G.
Vitreoretinal surgery days, XVIII Ed., Monza, November 4, 2017

ALCHIMIA
YOUR IDEAS, OUR SOLUTIONS

AL.CHI.MI.A. S.R.L.
VIALE AUSTRIA, 14
35020 - PONTE SAN NICOLÒ (PD) - ITALY

+39 049 89.62.074
+39 049 89.62.064

+39 049 89.62.071

WWW.ALCHIMIASRL.COM
INFO@ALCHIMIASRL.COM

ophthalmic surgery

ALCHIMIA

Retinal Dyes

AN INNOVATIVE **PPP** (PROPRIETARY PURIFICATION PROCESS) TO OBTAIN THE PUREST DYES OF ALL



PURE



SAFE



BIOCOMPATIBLE



EFFECTIVE STAINING



READY TO USE



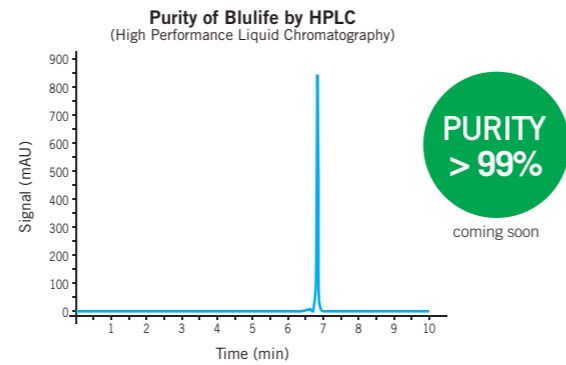
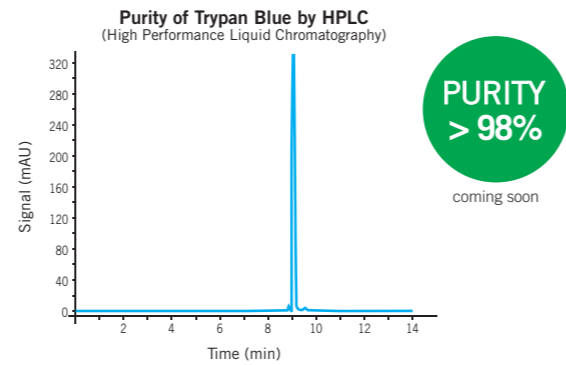
FACEBOOK



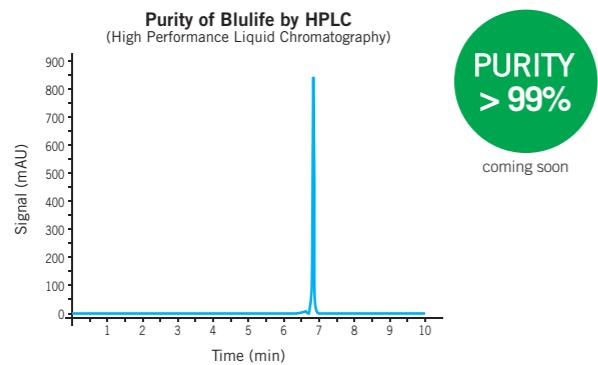
YOUTUBE



TWIN, THE PUREST **BLULIFE** AND **TRYPAN BLUE** CURRENTLY AVAILABLE FOR A DOUBLE STAINING SOLUTION CONTAINING A THICKENING AGENT THAT IMPROVES THE CONTACT WITH RETINAL MEMBRANES AND FACILITATES THEIR VISUALIZATION FOR SUBSEQUENT REMOVAL. TWIN IS **"THE CHOICE"** FOR THE STAINING OF THE INNER LIMITING MEMBRANE AND EPIRETINAL MEMBRANES.



| | TWIN | view ILM |
|-----------------------------------|-------------------------------------|---------------|
| DYE CONCENTRATION | BLULIFE 0,03% TRYPAN BLUE 0,18% | BLULIFE 0,03% |
| MAX ABSORBANCE (λ) | 584 nm | 574 nm |
| HYDROGENIONIC ACTIVITY (pH units) | 7,00 – 7,40 | |
| OSMOLALITY (mOsm/kg) | 270 – 330 | |
| BACTERIAL ENDOTOXINS (EU/ml) | < 0,5 | |
| SHELF LIFE | 36 months | |
| REFERENCE | RMB 004-00 | RMB 003-00 |
| CONTENTS | 6 prefilled syringes of 0,7 ml each | |



view ILM, THE PUREST **BLULIFE** CURRENTLY AVAILABLE FOR A STAINING SOLUTION CONTAINING A THICKENING AGENT THAT IMPROVES THE CONTACT WITH INNER LIMITING MEMBRANE AND FACILITATES ITS VISUALIZATION FOR SUBSEQUENT REMOVAL. view ILM IS **"THE CHOICE"** FOR THE STAINING OF INNER LIMITING MEMBRANE.

Technical details

| | ALCHIMIA | FLUORON | DORC |
|----------------------------|------------------------------------|--------------------------------------|--|
| PRODUCT | TWIN | BRILLIANT PEEL DUAL DYE | MEMBRANEBLUE DUAL |
| DYES | BLULIFE TRYPAN BLUE | BBG BROMOPHENOL BLUE | BBG TRYPAN BLUE |
| DYE CONCENTRATION | BLULIFE 0,03% TRYPAN BLUE 0,18% | BBG 0,025% BROMOPHENOL BLUE 0,13% | BBG 0,025% TRYPAN BLUE 0,15% |
| DYE PURITY | BLULIFE > 99% TRYPAN BLUE > 98% | BBG N/A* BROMOPHENOL BLUE N/A* | BBG up to 97% TRYPAN BLUE up to 97% |
| STAINED MEMBRANES | ILM + PVR + ERM | ILM + PVR + ERM | ILM + PVR + ERM |
| ILM STAINING DYE | BLULIFE | BBG | BBG |
| ILM DYE SAFE CONCENTRATION | < 0,12%** | < 0,03%** | < 0,03%** |

* N/A = NOT AVAILABLE
** CYTOTOXICITY TEST BY DIRECT CONTACT ACCORDING TO ISO 10993-5:2009

Safety chart

The safety chart shows the safety margin existing between the used dye concentration and the toxic one based on the citotoxicity test according to ISO 10993-5:2009.
The safety margin of blulife is 18 times higher than that of BBG.

